



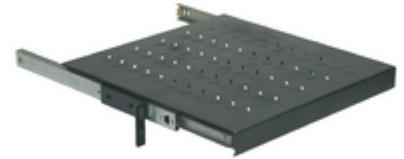
## Surface mounting components: Extractable shelf 2u 450mm depth

### 03204.2U

System infrastructure / Netsafe structured wiring / Surface mounting components / Carpentry

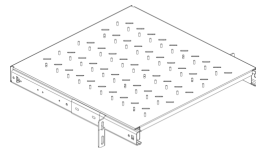
#### Extractable shelf 2u 450mm depth

Removable organizer tray, 450 mm depth - 2 rack units



3 - Active

1 NR



3D

- **Class group:** Cabinet enclosures
- **Class:** Electronic enclosure
- **Width:** 490 mm
- **Height:** 89,40 mm
- **Depth:** 459,50 mm

- **Material:** Other
- **Surface finishing:** Lacquered
- **Colour:** Grey
- **RAL-number:** 0
- **With ventilation slots:** No



8007352276734  
1 NR  
49.8x52.8x10.8 [cm]  
5,979.33 [g]

Vimar