



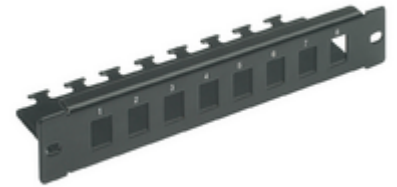
## Surface mounting components: 10 in organizer tray - 8 empty ports 1u

### 03303.E

System infrastructure / Netsafe structured wiring / Surface mounting components / Carpentry

### 10 in organizer tray - 8 empty ports 1u

10 in patch panel with 8 empty ports - 1 rack unit



3 - Active

1 NR



3D

- **Class group:** Data and telecommunication
- **Class:** Patch panel copper (twisted pair)
- **Number of buses/couplings:** 8
- **Suitable for number of connectors:** 8
- **Type of connector:** Other
- **Screened:** No
- **Category:** Other
- **Connection type:** Other
- **Number of height units:** 1
- **Colour:** Other
- **RAL-number:** 0
- **Mounting method:** 254 mm (10 inch) mounting
- **Height:** 60,00 mm
- **Width:** 270,00 mm
- **Depth:** 44,00 mm



8 007352276840

8007352276840  
1 NR  
27x6x4.4 [cm]  
262.4 [g]



8 007352278431

8007352278431  
10 NR  
26x19.5x9.3 [cm]  
2,727.53 [g]

Vimar