



MASCOT: TV-RD-SAT single conn.male outlet 1dB i

06456.01

Wiring devices / Traditional wiring devices / MASCOT / Devices

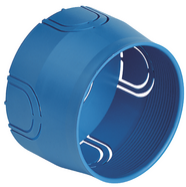
TV-RD-SAT single conn.male outlet 1dB i

Coaxial TV-RD-SAT 5-2400 MHz socket outlet, single connection, with IEC 60169-2 male connector, connection attenuation 1 dB, ivory. Allows the passage of d.c. current and control signals. (24 V 500 mA max)



2 - Will be discontinued

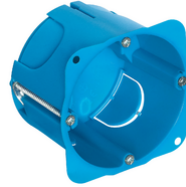
5 NR



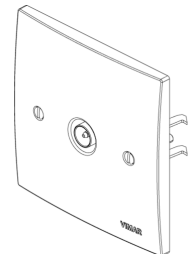
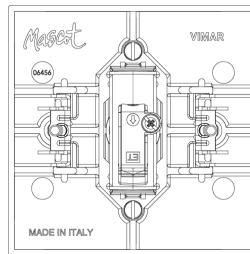
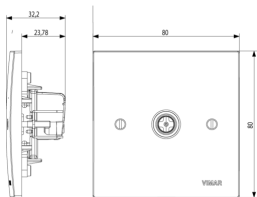
V71001 - Flush mounting box ø 60mm light blue



V71001.AU - Flush mounting box ø 60mm light black



V71701 - Round flush-mount box f/hollow wall blue



3D

- **Class group:** Antenna and satellite technique
- **Class:** Antenna socket box
- **Model:** End socket
- **Cover:** None
- **Tap loss at 860 MHz:** 0,10 dB
- **Tap loss at 2150 MHz:** 0,20 dB

- **Number of outlets:** 1
- **Suitable for remote power supply:** Yes
- **Type of fastening:** Snap mounting (engagement)
- **Colour:** Beige
- **RAL-number (similar):** 9001
- **Material:** Plastic

- 00. CE Marking - EU
- 37. Marking - Morocco

- 43. UKCA mark - Great Britain
- 99. WEEE Directive ([download](#))



8007352101685
1 NR
8x8x3.6 [cm]
79.5 [g]



8007352104761
5 NR
15.9x11.4x8.9 [cm]
466.8 [g]

Vimar