



MASCOT: TV-RD-SAT through-line male outlet 10dB w

06456.10.B

Wiring devices / Traditional wiring devices / MASCOT / Devices

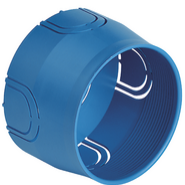
TV-RD-SAT through-line male outlet 10dB w

Coaxial TV-RD-SAT 5-2400 MHz socket outlet, through-line, with IEC 60169-2 male connector, connection attenuation 10 dB, white



2 - Will be discontinued

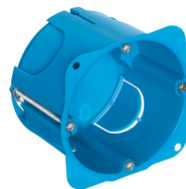
5 NR



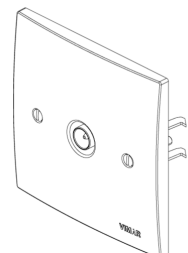
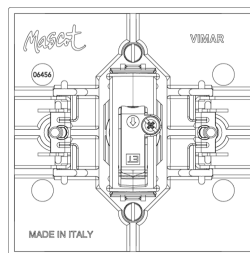
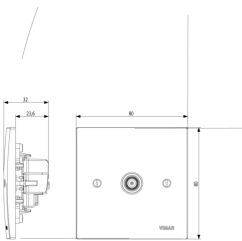
V71001 - Flush mounting box ø 60mm light blue



V71001.AU - Flush mounting box ø 60mm light black



V71701 - Round flush-mount box f/hollow wall blue



3D

- **Class group:** Antenna and satellite technique
- **Class:** Antenna socket box
- **Model:** Loop-through socket
- **Cover:** None
- **Tap loss at 860 MHz:** 10,60 dB
- **Tap loss at 2150 MHz:** 9,90 dB
- **Number of outlets:** 1

- **Through loss at 860 MHz:** 2,20 dB
- **Through loss at 2150 MHz:** 3,40 dB
- **Suitable for remote power supply:** No
- **Type of fastening:** Snap mounting (engagement)
- **Colour:** White
- **RAL-number (similar):** 9003
- **Material:** Plastic

- 00. CE Marking - EU
- 37. Marking - Morocco

- 43. UKCA mark - Great Britain
- 99. WEEE Directive ([download](#))



8007352101746
1 NR
8x8x3.6 [cm]
90.6 [g]



8007352104792
5 NR
15.9x11.4x8.9 [cm]
518.1 [g]

Vimar