



MASCOT: 1P 10AX 1-way switch+P30 outlet white

06696.B

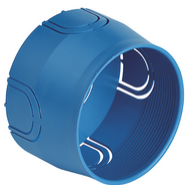
Wiring devices / Traditional wiring devices / MASCOT / Devices

1P 10AX 1-way switch+P30 outlet white

1P 10 AX 250 V~ 1-way switch + 2P+E 16 A 250 V~ SICURY socket outlet, Italian standard P30 (lateral and central earth contacts), white

2 - Will be discontinued

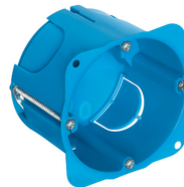
20 NR



V71001 - Flush mounting box ø 60mm light blue



V71001.AU - Flush mounting box ø 60mm light black



V71701 - Round flush-mount box f/hollow wall blue

- **Class group:** Domestic switching devices
- **Class:** Combination switch/wall socket outlet
- **Type of switch:** Off switch
- **Type of socket outlet:** Other
- **Number of socket outlets:** 1
- **Method of operation:** Rocker/button
- **Mounting direction:** Horizontal and vertical
- **Type of fastening:** Mounting with claw
- **With lighting:** No
- **Mounting method:** Flush-mounted
- **Material:** Plastic
- **Material quality:** Thermoplastic
- **Halogen free:** Yes
- **Surface protection:** Untreated

- **Surface finishing:** Matt
- **Colour:** White
- **RAL-number (similar):** 9003
- **Transparent:** No
- **Suitable for degree of protection (IP):** IP20
- **Nominal voltage:** 250 V
- **Nominal current socket outlet:** 16 A
- **Rated current:** 16 A
- **Over voltage protection:** No
- **Fault current protection:** No
- **Device width:** 80,00 mm
- **Device height:** 80,00 mm
- **Device depth:** 36 mm

- 00. CE Marking - EU
- 01. IMQ - Italy ([download](#))
- 37. Marking - Morocco

- 96. Electrotechnical expert ([download](#))
- 99. WEEE Directive ([download](#))



8007352095496
1 NR
8x8x3.6 [cm]
87.93 [g]



8007352095649
20 NR
35.5x24.8x8.7 [cm]
1,983.67 [g]

Vimar