



8000: RJ45 Cat5e Netsafe UTP outlet

08459.11

System infrastructure / Netsafe structured wiring / 8000 / Devices

RJ45 Cat5e Netsafe UTP outlet

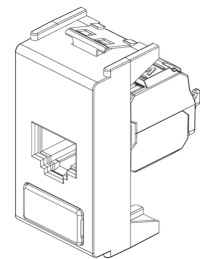
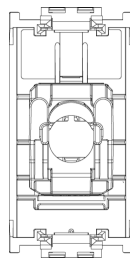
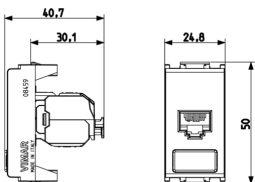
RJ45 socket with Netsafe connector, Cat. 5e, unshielded, T568A/B universal wiring, 8 contacts, insulation-piercing terminals without tool use - special module

3 - Active

10 NR



- [Multilanguage instructions sheet \(829 kb\)](#)



3D

- **Class group:** Data and telecommunication
- **Class:** Modular connector
- **Model:** Bus (jack)
- **Type of connector:** RJ45 8(8)
- **Screened:** No
- **Category:** 5E
- **Connection type:** Crimp

- **Special tool necessary:** No
- **Suitable for round cable:** Yes
- **Suitable for flat cable:** No
- **Suitable for litz wire conductor:** No
- **Suitable for solid conductors:** No
- **Colour:** Other
- **AWG-range:** 23 - 26

- 00. CE Marking - EU
- 10. EAC Eurasian Customs Union
- 24. FORCE Certificate ([download](#))

- 43. UKCA mark - Great Britain
- 99. WEEE Directive ([download](#))



8 007352463073

8007352463073
1 NR
5.1x4.3x5.3 [cm]
22.8 [g]



8 007352463080

8007352463080
10 NR
26.9x11.6x4.9 [cm]
302.6 [g]

Vimar