



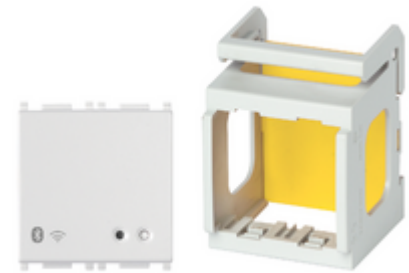
PLANA: Gateway 2M DIN rail white

OK14597.01

Wiring devices / View Wireless wiring devices / PLANA / Devices

Gateway 2M DIN rail white

IoT Bluetooth Wi-Fi Gateway for integration, configuration, supervision of View Wireless, via Cloud and App for smartphone, Tablet, 100-240 V 50/60 Hz power supply, installation on DIN rail (60715 TH35); occupies 2 modules size 17.5 mm



3 - Active

1 NR

- **Class group:** Installation bus systems
- **Class:** System interface/media gateway for bus system
- **Bus system KNX:** No
- **Bus system KNX-RF (Radio Frequent):** No
- **Bus system radio frequent:** Yes
- **Bus system LON:** No
- **Bus system Powernet:** No
- **Other bus systems:** Other
- **Radio frequent bidirectional:** Yes
- **Model:** Bluetooth interface
- **Mounting method:** DRA (DIN-rail adapter)
- **Width in number of modular spacings:** 2
- **Demounting protection:** No
- **With LED indication:** Yes
- **Updateable:** Yes
- **Protocol:** Other
- **Provider dependent:** No
- **Visualization:** No
- **Web-Server:** Yes
- **Radio interface:** Yes
- **IR interface:** No
- 00. CE Marking - EU ([download](#))
- 01. IMQ - Italy ([download](#))
- 29. QCERT - Colombia
- 37. Marking - Morocco
- 40. Bluetooth technology
- 41. Wi-Fi CERTIFIED
- 43. UKCA mark - Great Britain
- 99. WEEE Directive ([download](#))



8007352668218
1 NR
11.7x10.8x7.1 [cm]
119.2 [g]

Vimar