



IDEA: 2P+E 16A P30 outlet orange

16209.A

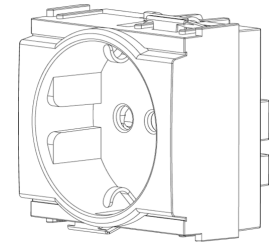
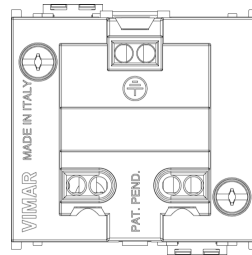
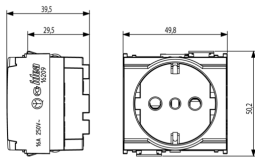
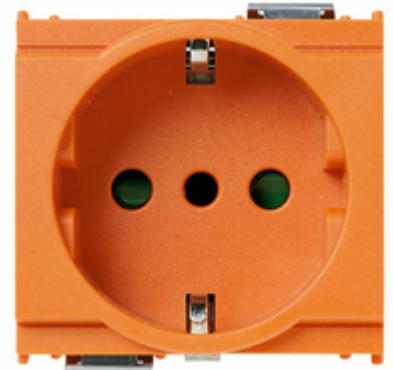
Wiring devices / Traditional wiring devices / IDEA / Devices

2P+E 16A P30 outlet orange

2P+E 16 A 250 V~ SICURY socket outlet, Italian standard P30 (lateral and central earth contacts), orange - 2 modules

2 - Will be discontinued

20 NR



3D

- **Class group:** Domestic switching devices
- **Class:** Socket outlet
- **Model:** Italian type P30
- **Number of modules (module system):** 2
- **Number of socket outlets switchable:** 0
- **Imprint/indication:** None
- **Connection type:** Screwed terminal
- **With hinged lid:** No
- **With enhanced contact protection:** Yes
- **Label space/information surface:** Yes
- **Colour:** Orange
- **RAL-number (similar):** 9001
- **Metallic colour:** No
- **Transparent:** No
- **Lockable:** No
- **Eject-mechanism:** No
- **Insulated mounting:** No
- **With function lighting:** No
- **With orientation lighting:** No
- **Over voltage protection:** No

- **Fault current protection:** No
- **With miniature fuse:** No
- **Mounting method:** Flush-mounted
- **Type of fastening:** Snap mounting (engagement)
- **Material:** Plastic
- **Material quality:** Thermoplastic
- **Halogen free:** Yes
- **Surface protection:** Untreated
- **Surface finishing:** Matt
- **With loop through function:** No
- **With on/off switch:** No
- **Rotated central insert:** No
- **Nominal current:** 16 A
- **Nominal voltage:** 250 V
- **Frequency:** 50,00 - 60,00 HZ
- **Suitable for degree of protection (IP):** IP20
- **Impact strength:** Other
- **Device width:** 49,80 mm
- **Device height:** 50,10 mm
- **Device depth:** 38,80 mm

• 00. CE Marking - EU

• 37. Marking - Morocco



8 007352100671
 1 NR
 5.1x4.3x5.3 [cm]
 48.6 [g]



8007352100688
 20 NR
 26.9x11.6x9 [cm]
 1,050.33 [g]