



IDEA: 2P+E 16A P30 outlet green

16209.V

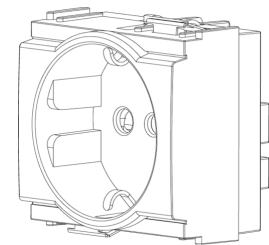
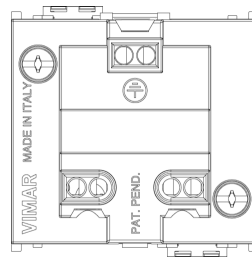
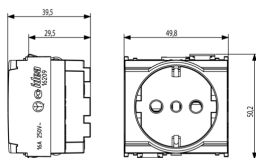
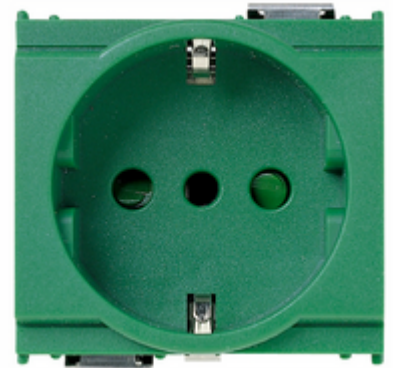
Wiring devices / Traditional wiring devices / IDEA / Devices

2P+E 16A P30 outlet green

2P+E 16 A 250 V~ SICURY socket outlet, Italian standard P30 (lateral and central earth contacts), green - 2 modules

2 - Will be discontinued

20 NR



3D

- **Class group:** Domestic switching devices
- **Class:** Socket outlet
- **Model:** Italian type P30
- **Number of units:** 1
- **Number of modules (module system):** 2
- **Number of socket outlets switchable:** 0
- **Imprint/indication:** None
- **Connection type:** Screwed terminal
- **With hinged lid:** No
- **With enhanced contact protection:** Yes
- **Label space/information surface:** Yes
- **Colour:** Green
- **RAL-number (similar):** 6029
- **Metallic colour:** No
- **Transparent:** No
- **Lockable:** No
- **Eject-mechanism:** No
- **Insulated mounting:** No
- **With function lighting:** No
- **With orientation lighting:** No
- **Over voltage protection:** No
- **Fault current protection:** No
- **With miniature fuse:** No
- **Mounting method:** Flush-mounted
- **Type of fastening:** Snap mounting (engagement)
- **Material:** Plastic
- **Material quality:** Thermoplastic
- **Halogen free:** Yes
- **Surface protection:** Untreated
- **Surface finishing:** Matt
- **With loop through function:** No
- **With on/off switch:** No
- **Rotated central insert:** No
- **Nominal current:** 16 A
- **Nominal voltage:** 250 V
- **Frequency:** 50,00 - 60,00 HZ
- **Suitable for degree of protection (IP):** IP20
- **Impact strength:** Other
- **Device width:** 49,80 mm
- **Device height:** 50,10 mm
- **Device depth:** 38,80 mm
- 00. CE Marking - EU
- 37. Marking - Morocco
- 99. WEEE Directive ([download](#))



8007352100718
1 NR
5.1x4.3x5.3 [cm]
48.8 [g]



8007352100725
20 NR
26.9x11.6x9 [cm]
1,056.2 [g]