



IDEA: TORCIA hand lamp 230V white

16450.B

Wiring devices / Traditional wiring devices / IDEA / Devices

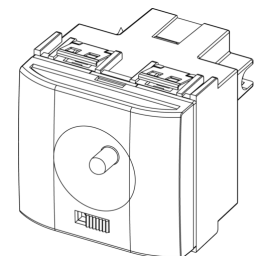
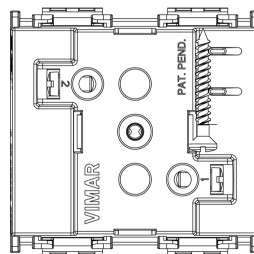
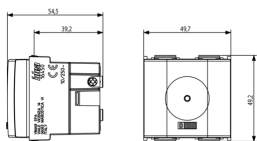
TORCIA hand lamp 230V white

TORCIA, electronic hand lamp with high-efficiency LED, supply voltage 230 V~ 50-60 Hz, automatic emergency device, replaceable rechargeable Ni-MH battery, 2 hours of operating, \varnothing 4 mm pins, 19 mm distance between centres + charging socket outlet, white - 2 modules

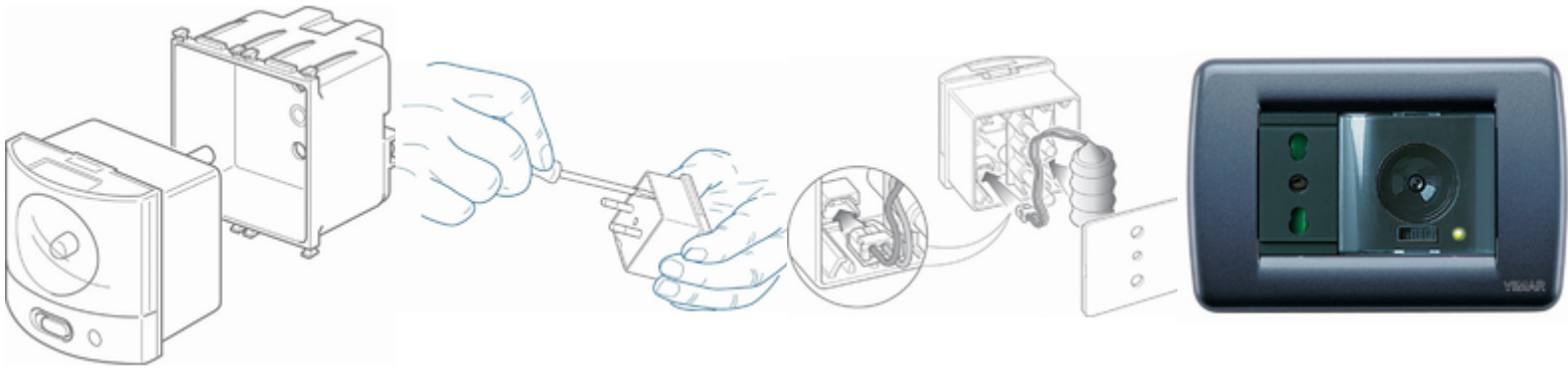
3 - Active

10 NR

- [Multilanguage instructions sheet \(484 kb\)](#)



3D



- **Class group:** Luminaires
- **Class:** Emergency luminaire
- **Mounting method:** Built-in
- **Monitoring equipment:** None
- **With remote switch connection:** No
- **Power supply system:** Peripheral (individual battery)
- **Battery quality:** NiMH
- **Lamp type:** LED not exchangeable
- **With light source:** Yes
- **Housing material:** Plastic
- **Housing colour:** White

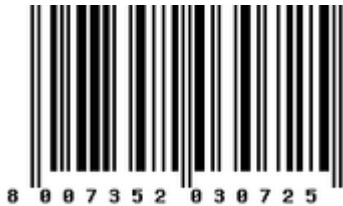
- **Material cover:** Without cover
- **Voltage type:** AC
- **Nominal voltage:** 230,00 - 230,01 V
- **Degree of protection (IP):** IP40
- **Protection class:** II
- **Max. system power:** 1,00 W
- **Width:** 49,70 mm
- **Height/depth:** 50,10 mm
- **Built-in width:** 49,70 mm
- **Built-in height/depth:** 39,20 mm

- 00. CE Marking - EU
- 10. EAC Eurasian Customs Union
- 37. Marking - Morocco

- 43. UKCA mark - Great Britain
- 96. Electrotechnical expert ([download](#))
- 99. WEEE Directive ([download](#))



8007352030671
1 NR
6x5.4x5.3 [cm]
94.46 [g]



8007352030725
10 NR
28.1x13.1x6 [cm]
1,021 [g]



8007352657335
120 NR
38.5x29x30 [cm]
12,732 [g]