



IDEA: TORCIA hand lamp 230V grey

16450

Wiring devices / Traditional wiring devices / IDEA / Devices

TORCIA hand lamp 230V grey

TORCIA, electronic hand lamp with high-efficiency LED, supply voltage 230 V~ 50-60 Hz, automatic emergency device, replaceable rechargeable Ni-MH battery, 2 hours of operating, \varnothing 4 mm pins, 19 mm distance between centres + charging socket outlet, grey - 2 modules

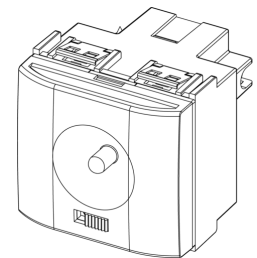
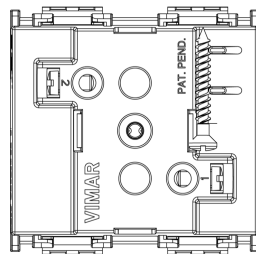
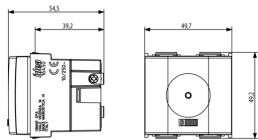
- Can be used as auxiliary lighting in the event of a power failure when inserted in the charger socket, while turning into a normal portable rechargeable hand lamp when removed
- Power supply: 230 V~ and 4-element replaceable rechargeable Ni-MH 4.8 V 80 mAh battery allowing the use of the device as an emergency light
- Slide switch to turn the TORCIA hand lamp on and off when it is used as a portable device or to enable or disable the auxiliary lighting function
- Battery charging time of 48 h and operating time after charging approximately 2 h



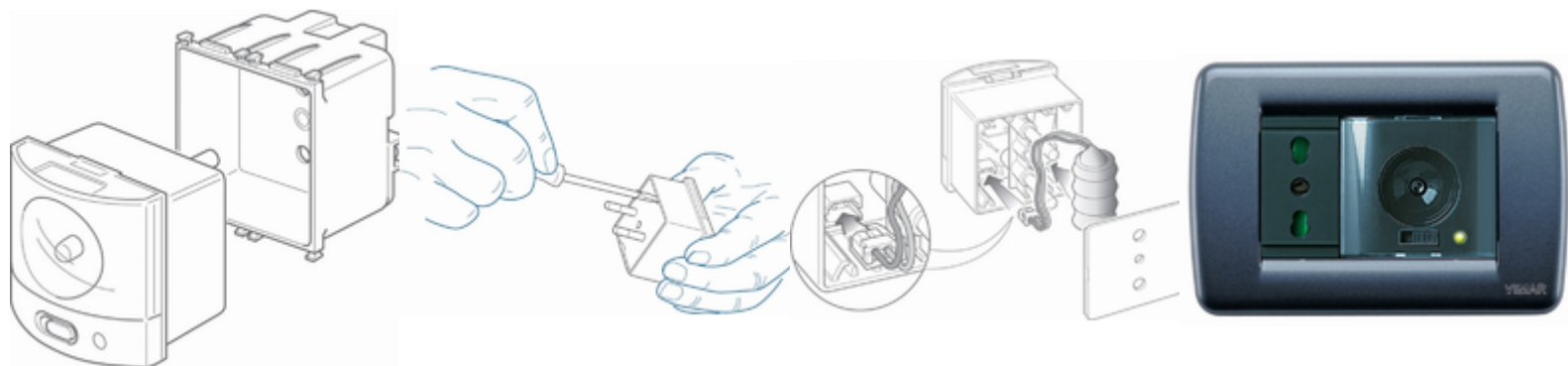
3 - Active

10 NR

- [Multilanguage instructions sheet \(484 kb\)](#)



3D



- **Class group:** Luminaires
- **Class:** Emergency luminaire
- **Mounting method:** Built-in
- **Monitoring equipment:** None
- **With remote switch connection:** No
- **Power supply system:** Peripheral (individual battery)
- **Battery quality:** NiMH
- **Lamp type:** LED not exchangeable
- **With light source:** Yes
- **Housing material:** Plastic
- **Housing colour:** Grey

- **Material cover:** Without cover
- **Voltage type:** AC
- **Nominal voltage:** 230,00 - 230,01 V
- **Degree of protection (IP):** IP40
- **Protection class:** II
- **Max. system power:** 1,00 W
- **Width:** 49,70 mm
- **Height/depth:** 50,10 mm
- **Built-in width:** 49,70 mm
- **Built-in height/depth:** 39,20 mm

- 00. CE Marking - EU
- 10. EAC Eurasian Customs Union
- 37. Marking - Morocco

- 43. UKCA mark - Great Britain
- 96. Electrotechnical expert ([download](#))
- 99. WEEE Directive ([download](#))



8 007352002098

8007352002098
1 NR
6x5.4x5.3 [cm]
93.67 [g]



8 007352002197

8007352002197
10 NR
28.1x13.1x6 [cm]
1,013.07 [g]



8 007352657182

8007352657182
120 NR
38.5x29x30 [cm]
12,602.4 [g]



8 007352587342

8007352587342
2,520 NR
120x80x105 [cm]
271,650 [g]

Vimar