



Switchboards: Frame 2M for DIN rail

16727

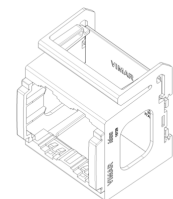
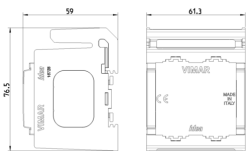
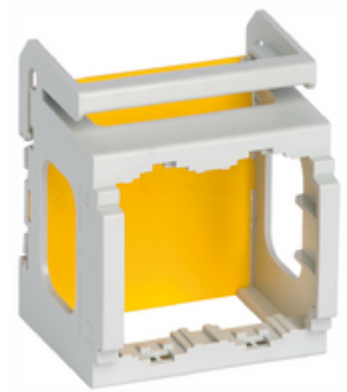
System infrastructure / Enclosures and control units / Switchboards / Shared accessories

Frame 2M for DIN rail

2-module frame for DIN (60715 TH35) rail installation, occupies 2 17,5 mm modules, RAL 7035 grey

3 - Active

20 NR



3D

- **Class group:** Domestic switching devices
- **Class:** Holder for modular domestic switching devices
- **Model:** Flush-mounted
- **Mounting method:** Snap mounting
- **Mounting method of the module inserts:** Back side
- **Mounting direction:** Horizontal and vertical
- **Number of modules horizontal (module system):** 2
- **Number of modules vertical (module system):** 1
- **With built-in installation box:** No

- **With screws:** No
- **Suitable for mounting in round junction box 60 mm:** No
- **Flush-mounted installation:** No
- **Suitable for subfloor installation duct box:** No
- **Suitable for wall duct:** No
- **Suitable for mounting on DIN-rail 35 mm:** Yes
- **Material:** Plastic
- **Material quality:** Thermoplastic

- 00. CE Marking - EU
- 01. IMQ - Italy ([download](#))

- 43. UKCA mark - Great Britain
- 96. Electrotechnical expert ([download](#))



8007352133402
1 NR
7.7x6.1x5.9 [cm]
28.4 [g]



8007352133419
20 NR
35.5x24.8x8.7 [cm]
728.13 [g]

Vimar