



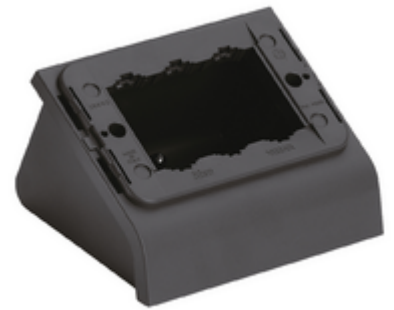
Connector block boxes: Table mounting box 3M grey

16803

System infrastructure / Enclosures and control units / Connector block boxes
/ Desktop

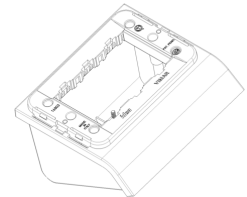
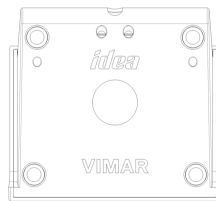
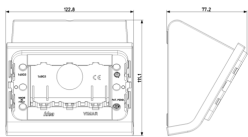
Table mounting box 3M grey

3-module table mounting box with cord-grip, for 3-module installation, grey.
Suitable only for Classica cover plate



3 - Active

2 NR



3D

- **Class group:** Domestic switching devices
- **Class:** Surface mounted box for flush-mounted switching equipment
- **Assembly arrangement:** Other
- **Suitable for modular domestic switching devices:** Yes
- **Number of modules (module system):** 3
- **Number of units:** 3
- **Mounting direction:** Horizontal
- **Material:** Plastic
- **Material quality:** Other
- **Halogen free:** Yes
- **Surface protection:** Untreated
- **Surface finishing:** Matt

- **Colour:** Grey
- **RAL-number (similar):** 7015
- **Transparent:** No
- **With cover frame:** No
- **With duct entry:** No
- **With cable entry:** Yes
- **With screw gland entry:** No
- **Shock resistant:** Yes
- **Degree of protection (IP):** IP20
- **Device width:** 122,80 mm
- **Device height:** 71,20 mm
- **Device depth:** 77,40 mm

- 00. CE Marking - EU
- 01. IMQ - Italy ([download](#))

- 43. UKCA mark - Great Britain
- 96. Electrotechnical expert ([download](#))



8007352026056
1 NR
12.3x11x7.8 [cm]
198.93 [g]



8007352026063
2 NR
19x14.3x9.5 [cm]
476.73 [g]



8007352470347
20 NR
38.5x29.5x25 [cm]
5,227.4 [g]

Vimar