



IDEA: Rondò plate 1-2M metal polished gold

17093.32

Wiring devices / Traditional wiring devices / IDEA / Cover plates

Rondò plate 1-2M metal polished gold

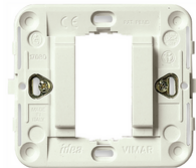
1-module or 2-reduced-module Rondò cover plate, die-cast metal, polished gold

3 - Active

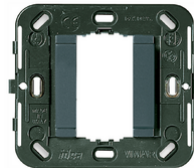
1 NR



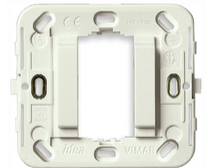
17080 - Frame 1M smooth front+claws grey



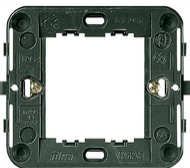
17080.B - Frame 1M smooth front+claws white



17086 - Frame 1M smooth no/screws ø60/56x56mm g



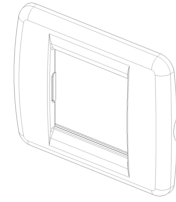
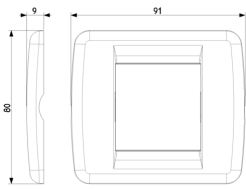
17086.B - Frame 1M smooth no/screws ø60/56x56mm w



17082 - Frame 2reducedM+claws for ø60mm



17087 - Frame 2red.M no/screws ø60/56x56mm



3D

- **Class group:** Domestic switching devices
- **Class:** Cover frame for domestic switching devices
- **Number of units:** 2
- **Mounting direction:** Horizontal and vertical
- **Number of units horizontal:** 2
- **Number of units vertical:** 1
- **Number of modules horizontal (module system):** 2
- **Number of modules vertical (module system):** 1
- **With mounting grid:** Yes
- **Suitable for subfloor installation duct box:** Yes
- **Suitable for wall duct:** Yes
- **Suitable for built-in installation:** Yes
- **Label space/information surface:** Yes
- **Material:** Metal
- **Material quality:** Other
- **Halogen free:** Yes
- **Surface protection:** Lacquered
- **Surface finishing:** Glossy
- **Colour:** Gold
- **RAL-number (similar):** 1036
- **Transparent:** No
- **With hinged lid:** No
- **Degree of protection (IP):** IP00
- **Type of fastening:** Clamp mounting
- **Width:** 91,00 mm
- **Height:** 80,00 mm
- **Depth:** 9,00 mm
- **Built-in width:** 91,00 mm
- **Built-in height:** 80,00 mm
- **Diameter bore hole (opening):** 0 mm

- 01. IMQ - Italy ([download](#))



8007352094031
1 NR
8.5x9.1x1.1 [cm]
82.2 [g]



8007352094048
10 NR
9.9x12.4x9.6 [cm]
868.53 [g]