



## Connector block boxes: Table mounting box 4M grey

**19784**

System infrastructure / Enclosures and control units / Connector block boxes  
/ Desktop

### Table mounting box 4M grey

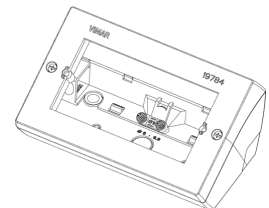
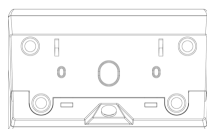
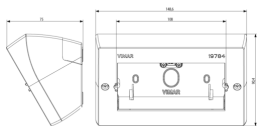
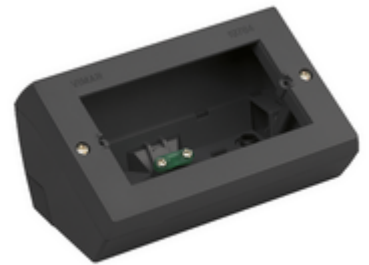
4-module table mounting box, grey. To complete with mounting frame and cover plate

3 - Active

8 NR

• [Multilanguage instructions sheet \(822 kb\)](#)

• [Arké lives in your time](#)



3D



- **Class group:** Domestic switching devices
- **Class:** Surface mounted box for flush-mounted switching equipment
- **Assembly arrangement:** Other
- **Suitable for modular domestic switching devices:** Yes
- **Number of modules (module system):** 4
- **Number of units:** 4
- **Mounting direction:** Horizontal
- **Material:** Plastic
- **Material quality:** Other
- **Halogen free:** Yes
- **Surface protection:** Untreated
- **Surface finishing:** Matt

- **Colour:** Grey
- **RAL-number (similar):** 7015
- **Transparent:** No
- **With cover frame:** No
- **With duct entry:** No
- **With cable entry:** Yes
- **With screw gland entry:** No
- **Shock resistant:** Yes
- **Degree of protection (IP):** IP20
- **Device width:** 142,50 mm
- **Device height:** 80,00 mm
- **Device depth:** 67,60 mm

- 00. CE Marking - EU
- 01. IMQ - Italy ([download](#))

- 43. UKCA mark - Great Britain
- 96. Electrotechnical expert ([download](#))



8007352437005  
1 NR  
15x9x7.5 [cm]  
200 [g]

8007352437012  
8 NR  
35x29.8x9.2 [cm]  
1,773 [g]