



EIKON: Switched 2P+E 15A English outlet white

20217.L.B

Wiring devices / Traditional wiring devices / EIKON / Devices

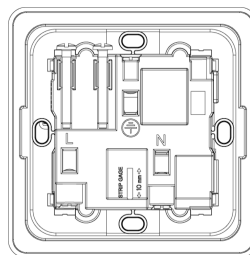
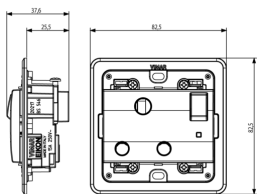
Switched 2P+E 15A English outlet white

2P+E 15 A 250 V~ SICURY socket outlet, English standard, 2P 1-way switch, indicator unit, with built-in mounting frame for 3-module British standard installation, white

3 - Active

10 NR

- [Multilanguage instructions sheet \(1337 kb\)](#)



3D

- **Class group:** Domestic switching devices
- **Class:** Socket outlet
- **Model:** British Standard
- **Number of units:** 2
- **Number of modules (module system):** 2
- **Number of socket outlets switchable:** 1
- **Imprint/indication:** None
- **Connection type:** Screwed terminal
- **With hinged lid:** No
- **With enhanced contact protection:** Yes
- **Label space/information surface:** Yes
- **Colour:** White
- **RAL-number (similar):** 9016
- **Metallic colour:** No
- **Transparent:** No
- **Lockable:** No
- **Eject-mechanism:** No
- **Insulated mounting:** No
- **With function lighting:** Yes
- **With orientation lighting:** No
- **Over voltage protection:** No
- **Fault current protection:** No
- **With miniature fuse:** No
- **Mounting method:** Flush-mounted
- **Type of fastening:** Mounting with screw
- **Material:** Plastic
- **Material quality:** Thermoplastic
- **Halogen free:** Yes
- **Surface protection:** Untreated
- **Surface finishing:** Matt
- **With loop through function:** No
- **With on/off switch:** Yes
- **Rotated central insert:** No
- **Nominal current:** 15 A
- **Nominal voltage:** 250 V
- **Frequency:** 50,00 - 60,00 HZ
- **Suitable for degree of protection (IP):** IP20
- **Impact strength:** Other
- **Device width:** 82,50 mm
- **Device height:** 82,50 mm
- **Device depth:** 37,60 mm
- 00. CE Marking - EU
- 08. ASTA - UK ([download](#))
- 37. Marking - Morocco
- 43. UKCA mark - Great Britain
- 92. RoHS UAE
- 99. WEEE Directive ([download](#))



8007352399938
1 NR
8.5x3.9x8.6 [cm]
104.4 [g]



8007352399945
10 NR
20.7x18.5x9.6 [cm]
1,141.4 [g]