



## Video: B/w s.-fam. Due Fili kit 13K1 +Petrarca

### 68IA/R

ELVOX Door entry system / 2F/2F+ video door entry system / Video / Video kits

### B/w s.-fam. Due Fili kit 13K1 +Petrarca

Due Fili black and white monitor kit for single-family system containing 1 x 13K1 wall- or flush-mounted anodized aluminium cover plate with 1 button, 1 x R131 additional button for adapting the entrance panel for a two-family kit, 1 x 68TU/K electronic unit, 1 x 6029 white wall-mounted monitor, 1 x 6218 white Petrarca wall-mounted interphone, 1 x 6145 fixing bracket, 1 x 692K power supply unit



2 - Will be discontinued

1 NR



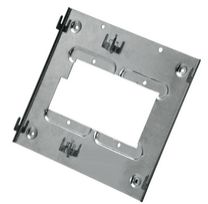
13K1 - 1-button a/v aluminium cover plate



R131 - External button for 1300 series panel



6029 - B/w Petrarca Due Fili monitor, white



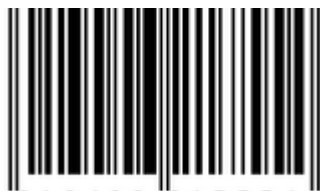
6145 - Fix. bracket interphones & monitors

- [Multilanguage instructions sheet \(1135 kb\)](#)
- [Additional instruction sheet \(241 kb\)](#)
- [Installer manual \(30549 kb\)](#)
- [MU - Manuale Utente ZIS\\_S6I.600.901 \(1041 kb\)](#)

- **Class group:** Communication technique
- **Class:** Accessories/spare parts for door communication
- **Suitable for:** Indoor station

- **Material:** Other
- **Colour:** Other

- 00. CE Marking - EU
- 37. Marking - Morocco
- 99. WEEE Directive ([download](#))



8013406217554  
1 NR  
51x29.5x10.5 [cm]  
3,057.4 [g]

Vimar