



Video: Video kit 1-Fam.Tab 7S Up Wi-Fi +1300E

K40517.E

ELVOX Door entry system / 2F/2F+ video door entry system / Video / Video kits

Video kit 1-Fam.Tab 7S Up Wi-Fi +1300E

Due Fili Plus one-family colour hands-free video door entry kit containing: 1 Tab 7S Up video entryphone 40517, white, with integrated Wi-Fi for call forwarding to smartphone, 1 1300/E series flush / surface mounting entrance panel 40151, 1 audio/video electronic unit 40135, 1 power supply unit 40110

- Connected thanks to integrated Wi-Fi
- With View App, more functions and improved control
- Multi-system and multi-user
- Also suitable for refurbishments
- With Teleloop, optical and acoustic signalling. Crystal-clear sound and visual feedback confirm the activation of the functions, facilitating use for the visually impaired or hearing aid wearers too



3 - Active

1 NR



40517 - Tab7S Up video entryphone 2F+ Wi-Fi whit



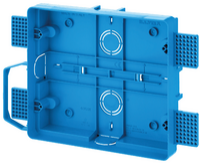
40151 - Audio/Video color entrance panel 1Fam.



40135 - Audio/Video unit 2F+



40110 - Supply unit 2F+ 100-240V 1 OUT 1,6A



40591 - Box for Tab7 Up video entryphone



40596 - Tab 7 Up desktop



732I.E.100 - 2F+ LSZH cable 2x1 outer laying Eca 100m



732I.E.500 - 2F+ LSZH cable 2x1 ext. laying Eca 500m



732H.E.100 - 2F+ PVC cable 2x1 intern.laying Eca 100m



732H.E.500 - 2F+ PVC-cable internal laying Eca 500m



732I.C.100 - 2F+ cable 2x1 LSZH Cca 100m purple

- Additional instruction sheet (241 kb)
- Multilanguage installer manual (10089 kb)
- Manuale app View Wireless (15556 kb)
- Manuel appli View Wireless (37703 kb)
- Manual app View Wireless (37528 kb)
- Manual View Wireless app (37579 kb)
- Εγχειρίδιο τεχνικού εγκατάστασης (37781 kb)
- Manual do utilizador (25522 kb)
- Manuale utente (25597 kb)
- Manuel de l'utilisateur (25510 kb)
- Manual de usuario (25495 kb)
- User Manual (25619 kb)
- Εγχειρίδιο χρήστη (25625 kb)
- Bedienungsanleitung (25681 kb)
- (25423 kb)

- Videoclip
- Wi-Fi configuration and smartphone
- Installation and configuration
- Functions and adjustments

- **Class group:** Communication technique
- **Class:** Door station set
- **With video:** Yes
- **Number of indoor stations:** 1
- **Number of outdoor stations:** 1
- **Installation technique:** Bus system
- **Mounting method indoor station:** Surface mounted
- **Colour indoor station:** White
- **Mounting method outdoor station:** Flush-mounted
- **Material outdoor station:** Aluminium
- **Colour outdoor station:** Silver
- **Picture system:** PAL

- **Can be connected to smartphone:** Yes
- **Internal communication:** Yes
- **Hands free:** Yes
- **With day/night function:** No
- **Opening angle camera:** 100
- **Zoom, pan/tilt function:** No
- **With memory function:** Yes
- **Screen diagonal:** 177,80 mm
- **Screen diagonal (inch):** 70
- **Manual adjustable camera:** No
- **Hearing aid compatible:** Yes

- 00. CE Marking - EU
- 32. FCC - USA
- 43. UKCA mark - Great Britain

- 92. RoHS UAE
- 99. WEEE Directive ([download](#))



8007352673212
1 NR
36x35.5x9 [cm]
1,841.8 [g]

Vimar