



Switchboards: Flush mounting box for V53112

V53312

System infrastructure / Enclosures and control units / Switchboards / Flush mounting

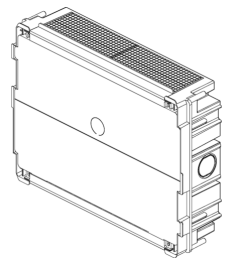
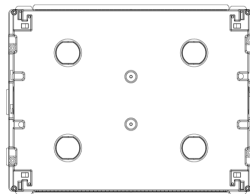
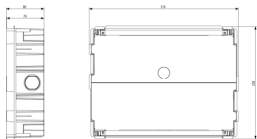
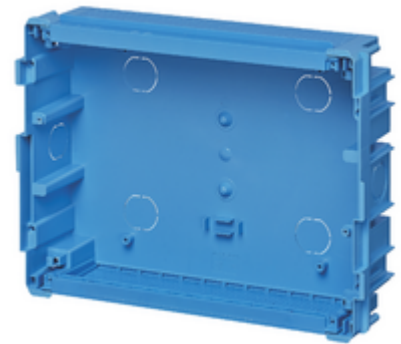
Flush mounting box for V53112

Flush mounting box for 12-module consumer unit (GW 650 °C) for masonry walls, light blue. Dimensions 316x238x80

3 - Active

11 NR

- [Flush mounting consumer units](#)



3D

- **Class group:** Distribution boards
- **Class:** Empty cabinet
- **Mounting method:** Flush-mounted
- **Type of covering:** None
- **Cover model:** None
- **Type of door:** None
- **Transparent cover/door:** No
- **With lock:** No
- **Nominal current (In):** 0 A
- **Height:** 238 mm
- **Width:** 316 mm
- **Depth:** 80,00 mm
- **Built-in depth:** 80,00 mm
- **Inner depth:** 78,00 mm
- **Colour:** Other

- **RAL-number:** 0
- **Number of modules:** 12
- **Number of rows:** 1
- **Width in number of modular spacings:** 12
- **Number of openings for flange plates:** 0
- **Extension possible:** No
- **Number of conduit inlets:** 6
- **Housing material:** Plastic
- **Surface protection:** Untreated
- **With mounting plate:** No
- **Suitable for outdoor use:** No
- **Suitable for lightning protection:** No
- **Degree of protection (IP):** IP40
- **Protection class:** II
- **Circuit integrity:** None

• 01. IMQ - Italy ([download](#))

• 96. Electrotechnical expert ([download](#))



8007352509894
1 NR
31.6x23.8x8 [cm]
413 [g]

8007352509900
11 NR
58x38x42.5 [cm]
5,600 [g]

Vimar