



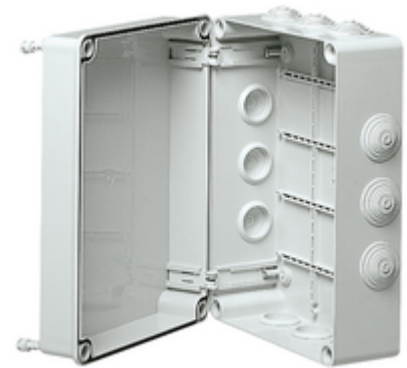
Junction boxes: IP55 junction box 300x220x120mm

V55109

System infrastructure / Enclosures and control units / Junction boxes /
Surface mounting

IP55 junction box 300x220x120mm

Surface mounting junction box with cable entries, cover closed with stainless steel screws, RAL 7035 grey. Supplied with two hinges. Dimensions 300x220x120 mm



3 - Active

6 NR

- [Multilanguage instructions sheet \(54 kb\)](#)

- **Class group:** Connection material (electrotechnical)
- **Class:** Box/housing for surface mounting on the wall/ceiling
- **Max. conductor cross section:** 0
- **Equipped with:** None
- **Shape:** Rectangular
- **Mounting method:** Wall-/ceiling mounting
- **Mounting in the soil:** No
- **Mounting under water:** No
- **For tube diameter:** 20/25 mm
- **Inlet from the rear:** No
- **Length:** 300,00 mm
- **Width:** 248,00 mm
- **Depth:** 127,00 mm
- **Diameter:** 0 mm
- **Tackable:** No
- **Number of inlets:** 12
- **Type of housing feed-through:** Trimmable step membrane
- **Material:** Plastic

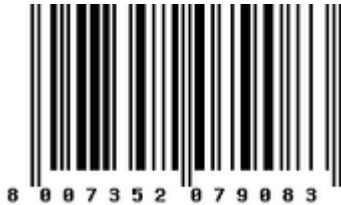
- **Halogen free:** No
- **Surface protection:** Untreated
- **Colour:** Grey
- **Degree of protection (IP):** IP55
- **Cover model:** Blind cover
- **Transparent cover:** No
- **Cover attachment:** Screwed
- **Castable:** No
- **With casting compound:** No
- **Sealable:** No
- **Rated insulation voltage Ui:** 450 V
- **Circuit integrity:** None
- **With screening:** No
- **Weatherproof:** Yes
- **Operating temperature:** 0 - 60 °C
- **Explosion-tested version:** No
- **For Ex-zone gas:** None
- **For Ex-Zone dust:** None

- 00. CE Marking - EU
- 01. IMQ - Italy ([download](#))

- 43. UKCA mark - Great Britain
- 96. Electrotechnical expert ([download](#))



8007352079076
1 NR
32.7x24.7x12.7 [cm]
979.13 [g]



8007352079083
6 NR
41x61x35 [cm]
6,843.33 [g]

Vimar