



## Connector block boxes: Flush mounting box $\varnothing$ 60mm light blue

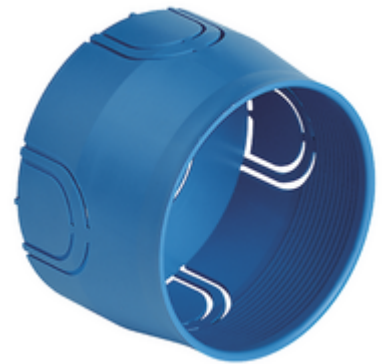
### V71001

System infrastructure / Enclosures and control units / Connector block boxes  
/ Flush mounting

#### Flush mounting box $\varnothing$ 60mm light blue

$\varnothing$  60 mm flush mounting box, (Glow Wire 650 °C), for masonry walls, light blue

- Plenty of space of internal wiring
- Knockouts designed for the insertion of pipes with various cross-sections
- Accessories available: anti-mortar covers and decorative covers



3 - Active

10 NR



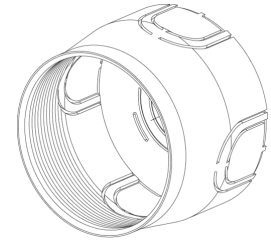
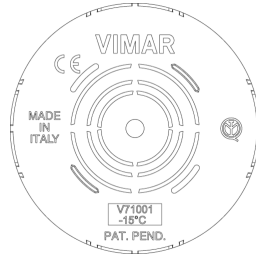
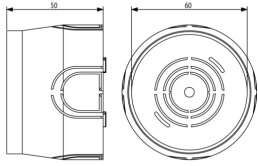
V71001.AU - Flush mounting box  $\varnothing$  60mm light black



V71632 - Flat cover 2M



V71011 - Antimortar cover for  $\varnothing$ 60mm box yellow



3D

- **Class group:** Connection material (electrotechnical)
- **Class:** Box/housing for built-in mounting in the wall/ceiling
- **Mounting method:** Flush-mounted
- **Shape:** Round
- **Construction type:** Device connection box (round/square)
- **Model:** Other
- **Provided with revolving ring:** No
- **Couplable:** Yes
- **Equipped with:** None
- **Diameter:** 60 mm
- **Length:** 60,00 mm
- **Width:** 60,00 mm
- **Depth:** 0,00 - 50,00 mm
- **Inner depth:** 50,00 mm
- **For number of electric fittings:** 2
- **Mounting switching equipment:** Spread
- **With screws:** No
- **Housing feed-through by break-out opening:** Yes
- **Housing feed-through by seal membrane:** No
- **Housing feed-through by nozzle:** No
- **Housing feed-through by step membrane:** No
- **For tube diameter:** 20/25 mm
- **Pipe locking:** No
- **Pipe locking optional:** No
- **Inlet from the rear:** Yes
- **Number of inlets:** 5
- **Number of included spouts:** 0
- **Material:** Plastic
- **Halogen free:** Yes
- **Surface protection:** Untreated
- **Colour:** Blue
- **Degree of protection (IP):** IP00
- **Cover model:** None
- **Transparent cover:** No
- **Cover attachment:** Screwed
- **Sealable:** No
- **Circuit integrity:** None
- **With screening:** No
- **Air tight:** No
- **Max. conductor cross section:** 0
- **Number of poles of the clamp:** 0
- **Clamp position fixed:** No
- **Luminaire hook mounting:** No
- **Nozzle:** None
- **Special application:** None
- 00. CE Marking - EU
- 01. IMQ - Italy ([download](#))
- 43. UKCA mark - Great Britain
- 96. Electrotechnical expert ([download](#))



8 007352079281

8007352079281  
1 NR  
6x6x5 [cm]  
15.2 [g]



8 007352083059

8007352083059  
10 NR  
25x14x7 [cm]  
159.13 [g]



8 007352111080

8007352111080  
200 NR  
59x38.5x30 [cm]  
4,144.67 [g]

Vimar