



Connector block boxes: Round flush-mount box f/hollow wall blue

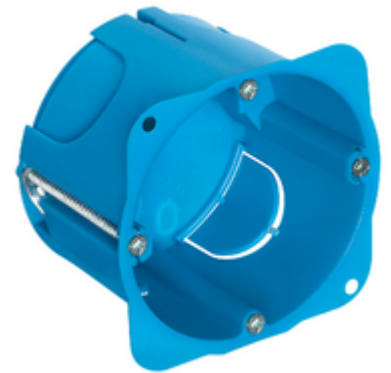
V71701

System infrastructure / Enclosures and control units / Connector block boxes
/ Flush mounting

Round flush-mount box f/hollow wall blue

Round mounting boxes (GW 850 °C) for hollow walls, light blue. SuiTable only
for mounting frames without screws

- Suitable for several types of hollow walls (e.g. plasterboard, wood, plastic laminate or similar)
- Preparation of the hole with a hollow cutter with a diameter of 68 mm. Hole centring plate incorporated into the back
- Improved retention knockouts, designed for the insertion of pipes with various cross-sections (16, 20 or 25 mm) and metal fins for surface mounting the box on walls with a variable thickness of between 1 and 38 mm
- Fixing lugs for support screws made of metal
- Wide range of accessories available: accessories with a template function for tracing the hole, with joining function for mounting in series and installation on the inside of the wall; internal partitions; decorative covers



3 - Active

5 NR

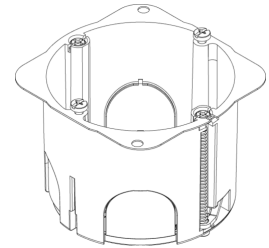
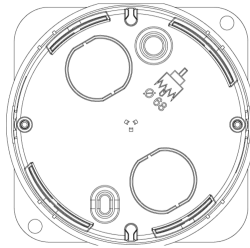
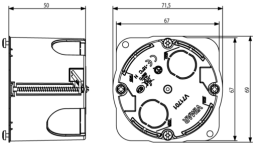


V71632 - Flat cover 2M



V71571 - Accessory for 2M boxes for hollow walls

- Tutorial ISOBOX EN



3D

- **Class group:** Connection material (electrotechnical)
- **Class:** Box/housing for built-in mounting in the wall/ceiling
- **Mounting method:** Hollow wall
- **Shape:** Rectangular
- **Construction type:** Device connection box (round/square)
- **Model:** Other
- **Provided with revolving ring:** No
- **Couplable:** Yes
- **Equipped with:** None
- **Diameter:** 68 mm
- **Length:** 71,50 mm
- **Width:** 71,50 mm
- **Depth:** 0,00 - 50,00 mm
- **Inner depth:** 50,00 mm
- **For number of electric fittings:** 2
- **Mounting switching equipment:** Screwing
- **With screws:** No
- **Housing feed-through by break-out opening:** Yes
- **Housing feed-through by seal membrane:** No
- **Housing feed-through by nozzle:** No
- **Housing feed-through by step membrane:** No
- **For tube diameter:** 20/25 mm
- **Pipe locking:** No

- **Pipe locking optional:** No
- **Inlet from the rear:** Yes
- **Number of inlets:** 8
- **Number of included spouts:** 0
- **Material:** Plastic
- **Halogen free:** Yes
- **Surface protection:** Untreated
- **Colour:** Blue
- **Degree of protection (IP):** IP00
- **Cover model:** None
- **Transparent cover:** No
- **Cover attachment:** Screwed
- **Sealable:** No
- **Circuit integrity:** None
- **With screening:** No
- **Air tight:** No
- **Max. conductor cross section:** 0
- **Number of poles of the clamp:** 0
- **Clamp position fixed:** No
- **Luminaire hook mounting:** No
- **Nozzle:** None
- **Special application:** None

- 00. CE Marking - EU
- 01. IMQ - Italy
- 15. CCC - China ([download](#))

- 43. UKCA mark - Great Britain
- 96. Electrotechnical expert ([download](#))



8007352425644
1 NR
7.1x6.9x5 [cm]
27.46 [g]



8007352425651
5 NR
7.1x6.9x25 [cm]
137.3 [g]



8007352425668
100 NR
38.5x29x30 [cm]
3,200 [g]