



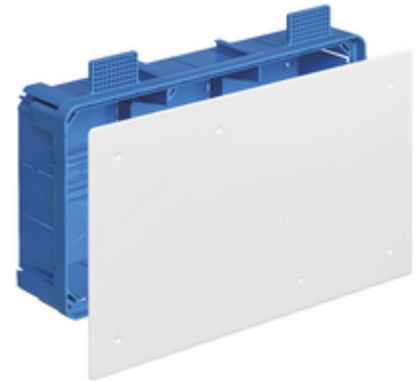
Junction boxes: Junction box hollow walls 298x164x73,5mm

V72007

System infrastructure / Enclosures and control units / Junction boxes / Flush mounting

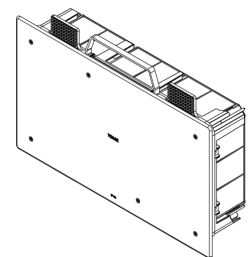
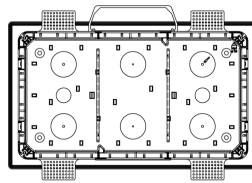
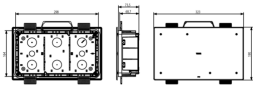
Junction box hollow walls 298x164x73,5mm

Flush mounting junction box for hollow walls with white cover and fixing screws. Dimensions 298x164x73.5 mm



3 - Active

7 NR



3D

- **Class group:** Connection material (electrotechnical)
- **Class:** Box/housing for built-in mounting in the wall/ceiling
- **Mounting method:** Flush-mounted
- **Shape:** Rectangular
- **Construction type:** Cable junction box
- **Model:** Other
- **Provided with revolving ring:** No
- **Couplable:** Yes
- **Equipped with:** None
- **Diameter:** 0 mm
- **Length:** 298,00 mm
- **Width:** 298,00 mm
- **Depth:** 0,00 - 73,50 mm
- **Inner depth:** 73,50 mm
- **For number of electric fittings:** 0
- **Mounting switching equipment:** Spread
- **With screws:** Yes
- **Housing feed-through by break-out opening:** Yes
- **Housing feed-through by seal membrane:** No
- **Housing feed-through by nozzle:** No
- **Housing feed-through by step membrane:** No
- **For tube diameter:** Other

- **Pipe locking:** Yes
- **Pipe locking optional:** Yes
- **Inlet from the rear:** Yes
- **Number of inlets:** 18
- **Number of included spouts:** 0
- **Material:** Plastic
- **Halogen free:** Yes
- **Surface protection:** Untreated
- **Colour:** Blue
- **Degree of protection (IP):** IP20
- **Cover model:** Blind cover
- **Transparent cover:** No
- **Cover attachment:** Screwed
- **Sealable:** No
- **With screening:** No
- **Air tight:** No
- **Max. conductor cross section:** 0
- **Number of poles of the clamp:** 0
- **Clamp position fixed:** No
- **Luminaire hook mounting:** No
- **Nozzle:** None
- **Special application:** None

- 00. CE Marking - EU
- 01. IMQ - Italy ([download](#))
- 43. UKCA mark - Great Britain

- 50. Product Environm. Profile
- 96. Electrotechnical expert ([download](#))



8007352589940
1 NR
32.3x22.7x7.6 [cm]
496 [g]



8007352589957
7 NR
59x38.5x24 [cm]
4,188 [g]